


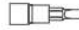
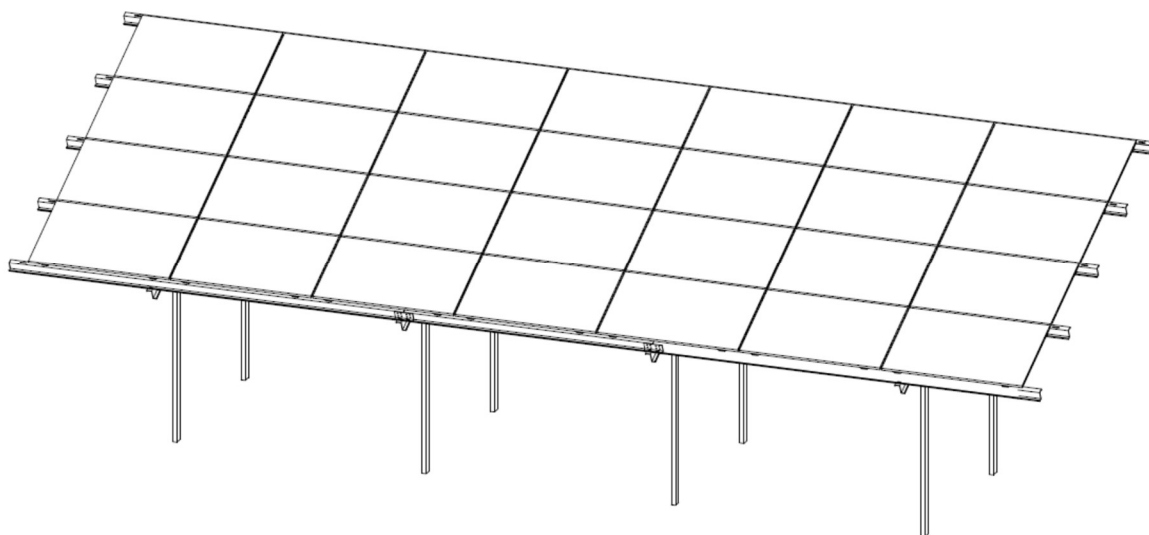


INSTALLATION INSTRUCTIONS

Free-standing, two-support system driven into the ground.
Table module layout: [Y = 4 - vertically] x [X = 3... 7 - horizontal]
Module size: [1036... 1093] x [2111 ... 2220]

Essential tools

	rozmiar/size 6		rozmiar/size 2 x 19 mm
	wkrętarka/screwdriver		koncówki - bity imbusowe/ screwdriver bits

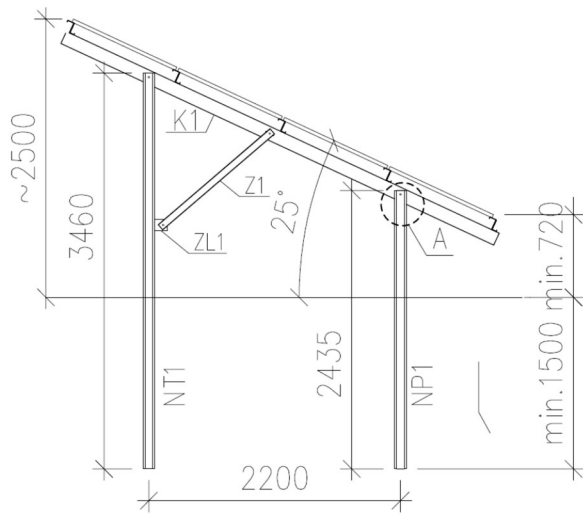
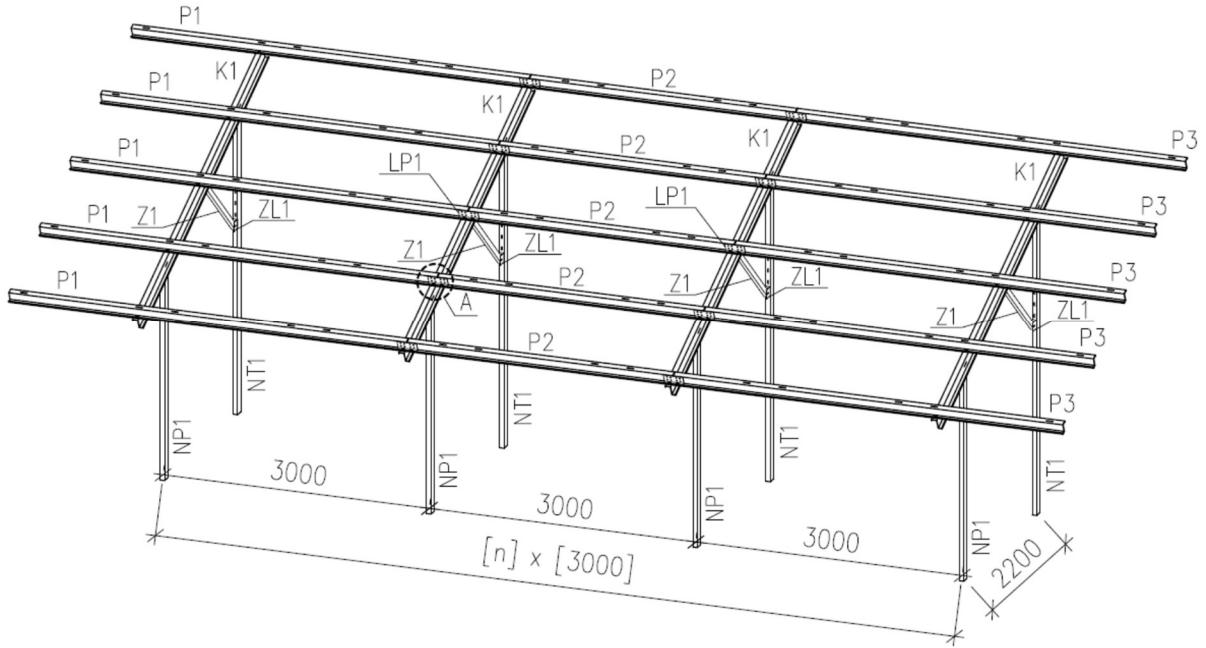


List of elements

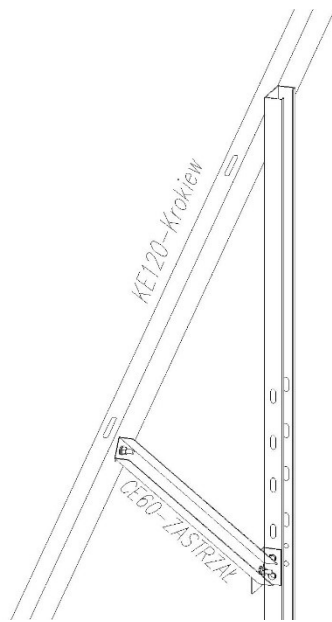
Lp.	Draft	Designation	Name	Number of modules				
				12	16	20	24	28
1		NT1	Hind leg	2	3	4	5	5
2		NP1	Carefully Front	2	3	4	5	5
3		K1	Rafter	2	3	4	5	5
4		Z1	Strut	2	3	4	5	5
5		ZL1	Angle	2	3	4	5	5
6		P1	Purlin P1	5	5	5	5	5
7		P2	Purlin P2	-	5	5	5	5
8		P3	Purlin P3	-	-	5	10	10
9		LP1	Purlin connector	-	5	10	15	15
10		NF1	Leg for inverter	1	1	1	1	1
11		OF1	Omega for inverter	2	2	2	2	2
				Fasteners for table construction				
12			Screw M12x30	32	43	54	65	75
13			Nut M12	32	43	54	65	75
14			Washer M12	32	43	54	65	75
15			Spring washer M12	32	43	54	65	75
				Fasteners for fixing panels				
16			Extreme clamp	12	16	20	24	28
17			Middle clamp	18	24	30	36	42
18			Allen screw M8	30	40	50	60	70
19			Hammer nut	30	40	50	60	70

20			Spring washer M8	30	40	50	60	70
----	--	--	-----------------------------	----	----	----	----	----

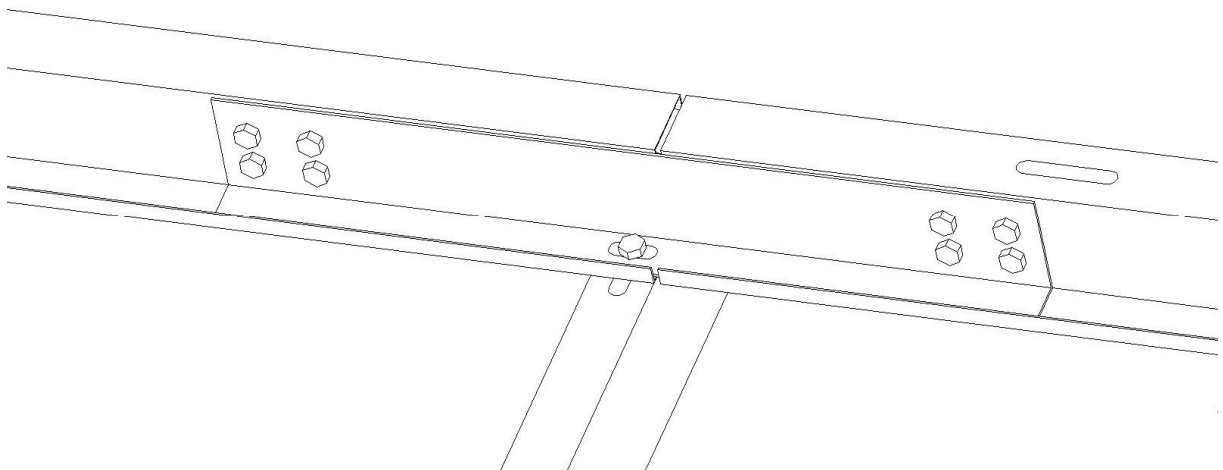
Table mounting



INSTALLATION OF RAFTERS – K1



PURLIN CONNECTOR – LP1



EXTREME / MIDDLE CLAMP

