


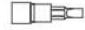
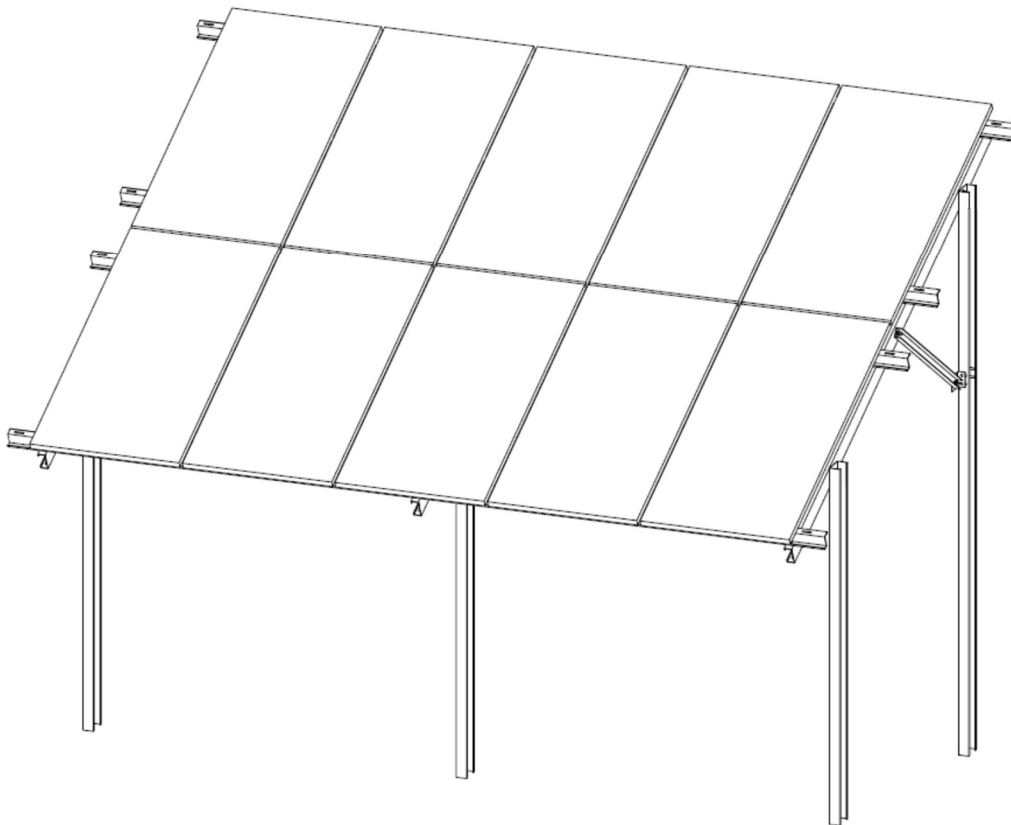


INSTALLATION INSTRUCTIONS

Free-standing, two-support system driven into the ground.
Table module layout: [Y = 3... 7 - vertical] x [X = 2 - horizontal]
Module size: [1036... 1093] x [2111 ... 2220]

Essential tools

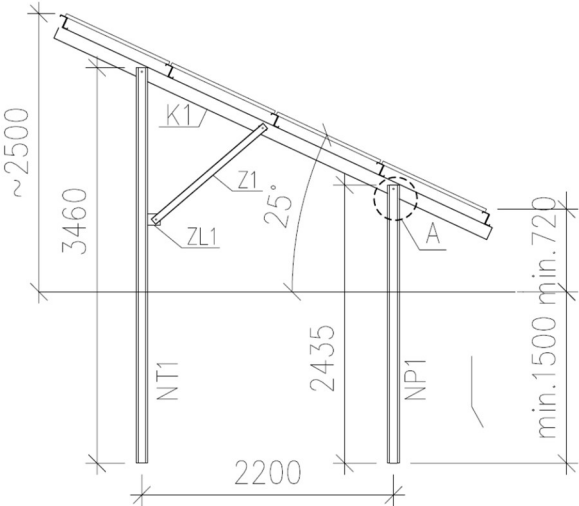
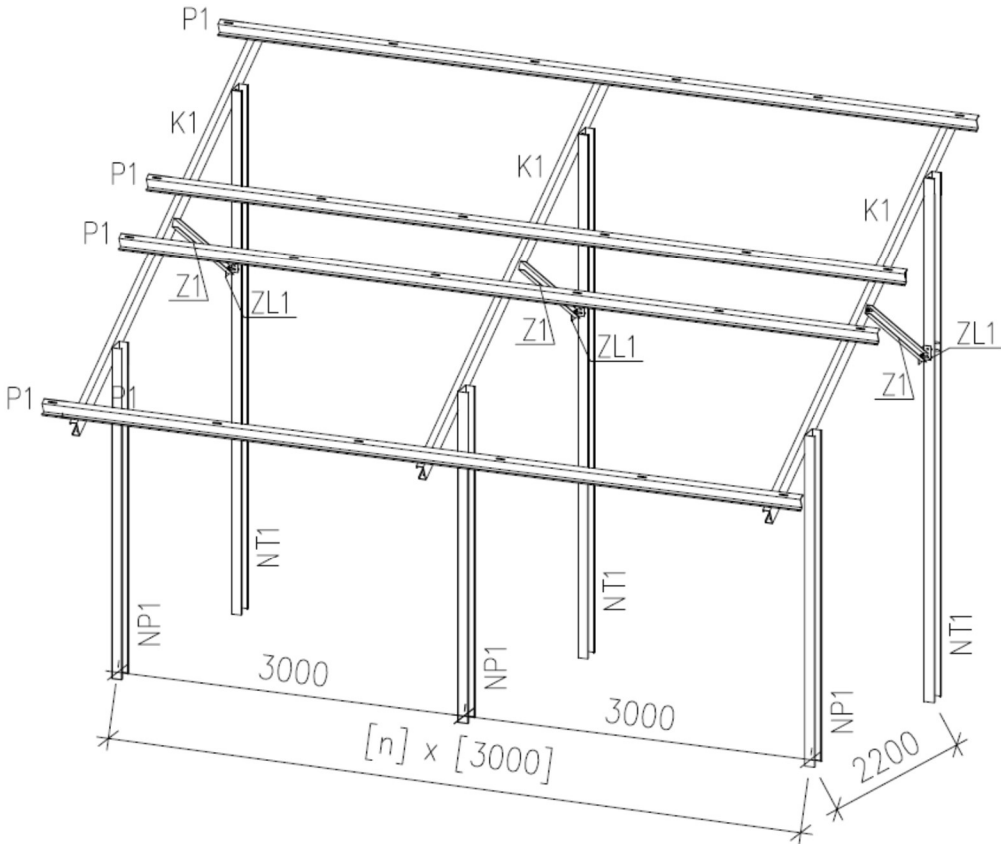
	rozmiar/size 6		rozm./size 2 x 19 mm
	wkrętarka/screwdriver		koncówki - bity imbusowe/ screwdriver bits



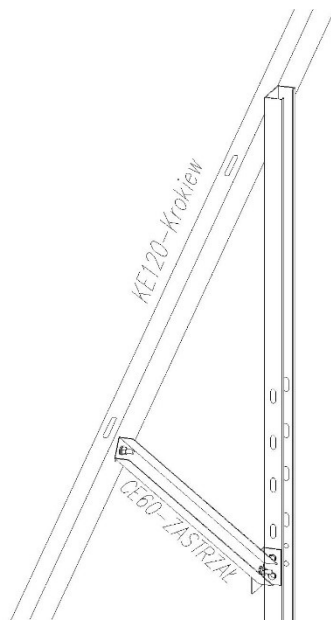
List of elements

No.	Draft	Designation	Name	Number of modules				
				6	8	10	12	14
1		NT1	Hind leg	2	2	2	3	3
2		NP1	Carefully Front	2	2	2	3	3
3		K1	Rafter	2	2	2	3	3
4		Z1	Strut	2	2	2	3	3
5		ZL1	Angle	2	2	2	3	3
6		P1	Purlin P1	4	4	4	4	4
7		P2	Purlin P2	-	-	-	4	4
8		P3	Purlin P3	-	-	-	-	-
9		LP1	Purlin connector	-	-	-	4	4
10		NF1	Leg for inverter	1	1	1	1	1
11		OF1	Omega for inverter	2	2	2	2	2
				Fasteners for table construction				
12			Screw M12x30	32	32	32	43	43
13			Nut M12	32	32	32	43	43
14			Washer M12	32	32	32	43	43
15			Spring washer M12	32	32	32	43	43
				Fasteners for fixing panels				
16			Extreme clamp	8	8	8	8	8
17			Middle clamp	8	12	16	20	24
18			Allen screw M8	16	20	24	28	32
19			Hammer nut	16	20	24	28	32
20			Spring washer M8	16	20	24	28	32

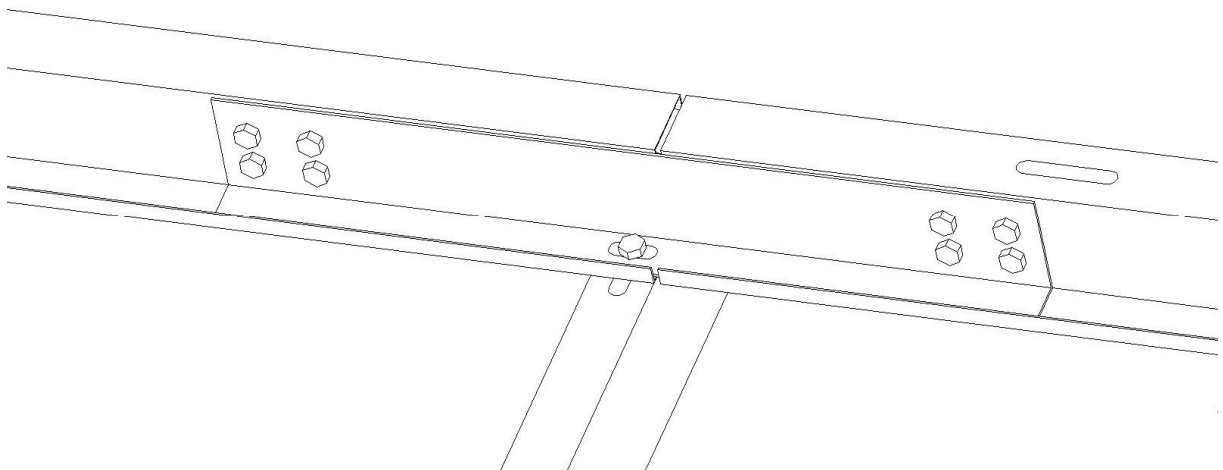
Table mounting



INSTALLATION OF RAFTERS – K1



PURLIN CONNECTOR – LP1



EXTREME / MIDDLE CLAMP

